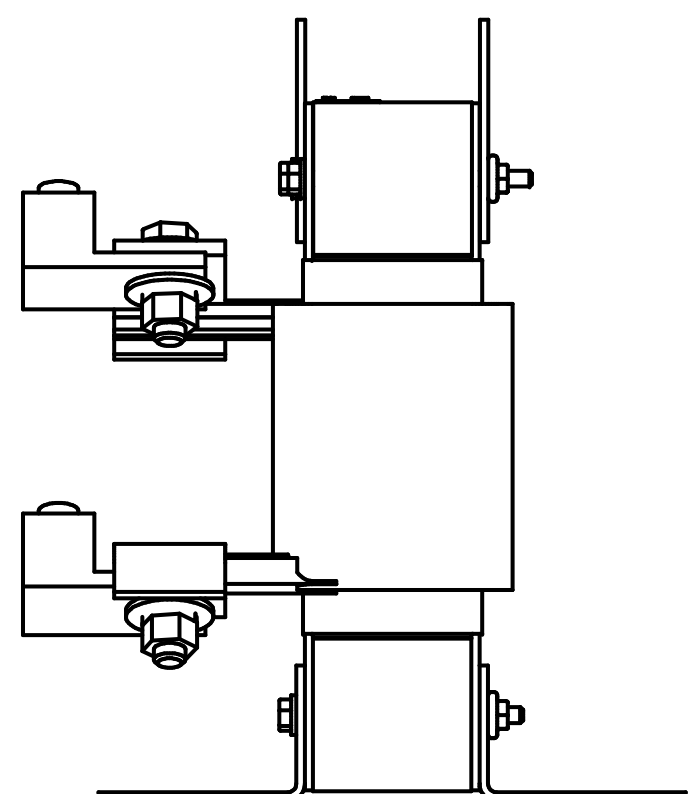
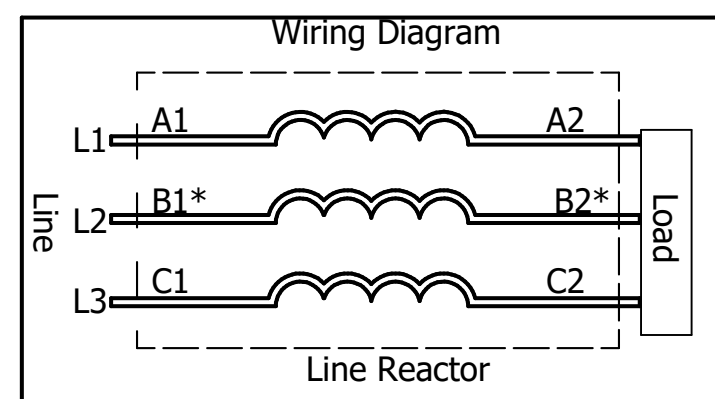
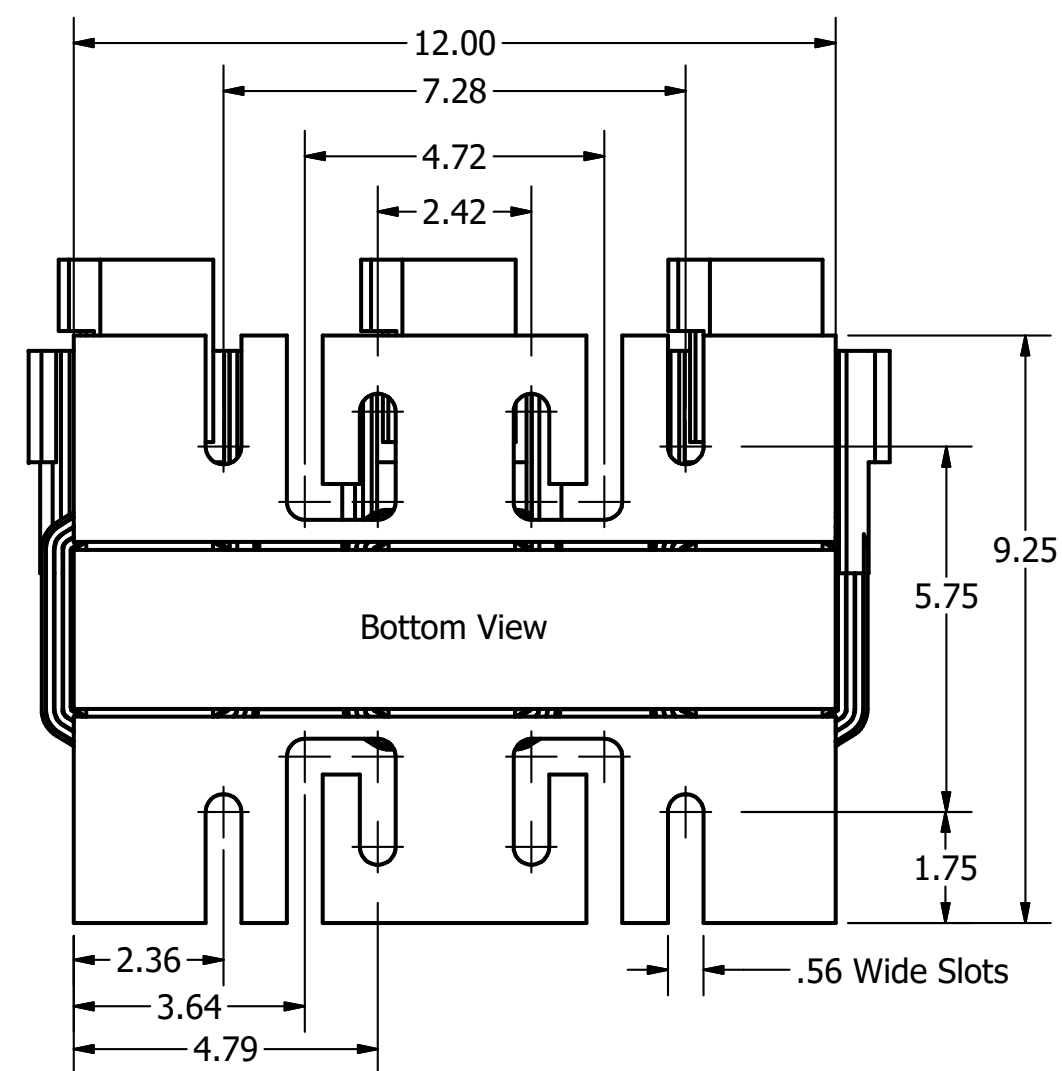


(Customer Connections) Markings On Coil For Reference Only.



Side View



\* For single phase applications, use coils A and C, Isolate terminals B1 and B2.

480 Rated Voltage, 600 Max Voltage, Output							
Part Number	Horsepower (HP)	Motor Amps (A)	Maximum Amps (A)	Inductance (uH)	Weight (LBS)	Losses (W)	Attached Lug Kit
KDRULL1P	350	414	420	26.4	88	275	SLK13
KDRULL2P	400	477	480	23.1	98	267	SLK13
KDRULL3P	450	515	600	19	103	338	SLK14
KDRULL4P	500	590	600	18.7	103	338	SLK14

575 Rated Voltage, 600 Max Voltage, Output							
Part Number	Horsepower (HP)	Motor Amps (A)	Maximum Amps (A)	Inductance (uH)	Weight (LBS)	Losses (W)	Attached Lug Kit
KDRULL31P	400	382	420	26.5	88	420	SLK13
KDRULL35P	450	412	420	26.4	88	420	SLK13
KDRULL32P	500	472	480	23.7	98	480	SLK13

480 Rated Voltage, 600 Max Voltage, High Z, Impedance.							
Part Number	Horsepower (HP)	Motor Amps (A)	Maximum Amps (A)	Inductance (uH)	Weight (LBS)	Losses (W)	Attached Lug Kit
KDRULL1H	250	302	310	106	108	548	SLK13
KDRULL2H	300	361	365	86	108	786	SLK13
KDRULL3H	350	414	435	74	112	750	SLK13
KDRULL4H	400	477	480	65	138	730	SLK13

480 Rated Voltage, 600 Max Voltage, Low Z, Impedance.							
Part Number	Horsepower (HP)	Motor Amps (A)	Maximum Amps (A)	Inductance (uH)	Weight (LBS)	Losses (W)	Attached Lug Kit
KDRULL1L	450	515	610	36.3	113	509	SLK14
KDRULL2L	500	590	610	31.5	113	518	SLK14

**TGI** (800) 824-8282 [transcoil.com](http://transcoil.com)

TGI, LLC  
Germantown, WI, USA  
[transcoil.com](http://transcoil.com)  
800-824-8282

KDRUL Drive Reactor  
KDRUL — Motor Amps —  
3PH, 50/60Hz, —V Rated, 600V Max, —A Max  
40C Amb Max, 155C Rise, RoHS  
Term Torque — lb-in

UL LISTED  
250 CONF. NO. 5540

DATE CODE

- Note: 1. UL file number: cULus Listed File E116124.  
2. KDR Drive Reactors Comply With The Thermal and Altitude Standards Set Forth by NEMA ST20-1992.  
3. For Terminal Torques And Wire Size See, KDR IOM Manual, Part Number 30895  
4. NEC Current For 208/240 Volts, Horsepower Based On 208 Volts.  
5. Material(s) Shall be RoHS Compliant  
6. Customer Is Responsible For Installation To Meet All National And Local Electrical Codes.

TGI, LLC CLAIMS PROPRIETARY RIGHTS IN THE MATERIAL HEREIN DISCLOSED. IT IS SUPPLIED WITHOUT PREJUDICE TO ANY PATENT RIGHTS OF TGI AND MAY NOT BE REPRODUCED OR USED TO MANUFACTURE ANYTHING SHOWN THEREIN WITHOUT WRITTEN PERMISSION FROM TGI.

A	Combined Drawings	3/23/18	DSW
NO	REVISION	DATE	BY

TOLERANCES (EXCEPT AS NOTED)  
DECIMAL  
.XX ± .25  
.XXX ± .10  
FRACTIONAL  
± 1/16  
ANGULAR  
± 1°

**TGI** W132 N10611 Grant Drive  
Germantown, WI 53022

KDRUL L Frame, Copper Bus  
Reactor Drawing

DRN BY: DSW DATE: 3/23/18 107537DG  
SCALE: 1/3.2 APRVD: SIZE: C SHT. 6 OF 10